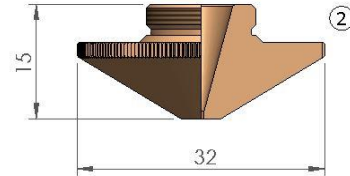
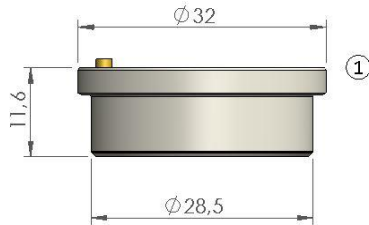


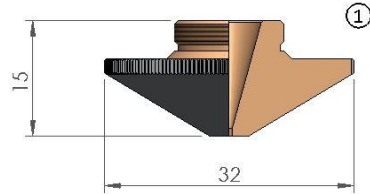
Replacement parts suitable for RAYTOOLS®



POS	CODE	ORIGINAL CODE	DESCRIPTION	unit price	5 pack price
1	069001	120274100B	RAYTOOLS® CERAMIC NOZZLE HOLDER		
2	061001	120GJT0508	RAYTOOLS® NOZZLE Ø 0.8		
	061001V	120GJT0508	RAYTOOLS® NOZZLE Ø 0.8		
	061002	120GJT0510	RAYTOOLS® NOZZLE Ø 1.0		
	061002V	120GJT0510	RAYTOOLS® NOZZLE Ø 1.0		
	061003	120GJT0512	RAYTOOLS® NOZZLE Ø 1.2		
	061003V	120GJT0512	RAYTOOLS® NOZZLE Ø 1.2		
	061004		RAYTOOLS® NOZZLE Ø 1.4		
	061004V		RAYTOOLS® NOZZLE Ø 1.4		
	061005	120GJT0515	RAYTOOLS® NOZZLE Ø 1.5		
	061005V	120GJT0515	RAYTOOLS® NOZZLE Ø 1.5		
	061006		RAYTOOLS® NOZZLE Ø 1.8		
	061006V		RAYTOOLS® NOZZLE Ø 1.8		
	061007	120GJT0520	RAYTOOLS® NOZZLE Ø 2.0		
	061007V	120GJT0520	RAYTOOLS® NOZZLE Ø 2.0		
	061008		RAYTOOLS® NOZZLE Ø 2.3		
	061008V		RAYTOOLS® NOZZLE Ø 2.3		
	061009	120GJT0525	RAYTOOLS® NOZZLE Ø 2.5		
	061009V	120GJT0525	RAYTOOLS® NOZZLE Ø 2.5		
	061010		RAYTOOLS® NOZZLE Ø 2.75		
	061010V		RAYTOOLS® NOZZLE Ø 2.75		
	061011	120GJT0530	RAYTOOLS® NOZZLE Ø 3.0		
	061011V	120GJT0530	RAYTOOLS® NOZZLE Ø 3.0		
	061012		RAYTOOLS® NOZZLE Ø 3.2		
	061012V		RAYTOOLS® NOZZLE Ø 3.2		
	061013	120GJT0535	RAYTOOLS® NOZZLE Ø 3.5		
	061013V	120GJT0535	RAYTOOLS® NOZZLE Ø 3.5		
	061014	120GJT0540	RAYTOOLS® NOZZLE Ø 4.0		
	061014V	120GJT0540	RAYTOOLS® NOZZLE Ø 4.0		
061015	120GJT0545	RAYTOOLS® NOZZLE Ø 4.5			
061015V	120GJT0545	RAYTOOLS® NOZZLE Ø 4.5			
061016	120GJT0550	RAYTOOLS® NOZZLE Ø 5.0			
061016V	120GJT0550	RAYTOOLS® NOZZLE Ø 5.0			
061017		RAYTOOLS® NOZZLE Ø 6.0			
061017V		RAYTOOLS® NOZZLE Ø 6.0			

San Giorgio Plasma Parts srls is not affiliated with the named manufacturers. Reference to machines, parts, descriptions, and model numbers are for convenience in verifying compatibility only. All parts are made by or for San Giorgio Plasma Parts srls and are not made by the reference manufacturers (unless expressly indicated). All other trademarks are the properties of their respective owners.®

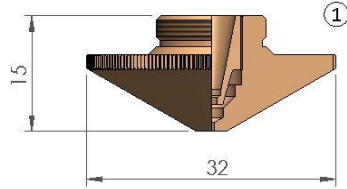
Replacement parts suitable for RAYTOOLS®



POS	CODE	ORIGINAL CODE	DESCRIPTION	unit price	5 pack price
1	061001C		RAYTOOLS® NOZZLE Ø 0.8 CP		
	061001CV		RAYTOOLS® NOZZLE Ø 0.8 CP		
	061002C		RAYTOOLS® NOZZLE Ø 1.0 CP		
	061002CV		RAYTOOLS® NOZZLE Ø 1.0 CP		
	061003C		RAYTOOLS® NOZZLE Ø 1.2 CP		
	061003CV		RAYTOOLS® NOZZLE Ø 1.2 CP		
	061004C		RAYTOOLS® NOZZLE Ø 1.4 CP		
	061004CV		RAYTOOLS® NOZZLE Ø 1.4 CP		
	061005C		RAYTOOLS® NOZZLE Ø 1.5 CP		
	061005CV		RAYTOOLS® NOZZLE Ø 1.5 CP		
	061006C		RAYTOOLS® NOZZLE Ø 1.8 CP		
	061006CV		RAYTOOLS® NOZZLE Ø 1.8 CP		
	061007C		RAYTOOLS® NOZZLE Ø 2.0 CP		
	061007CV		RAYTOOLS® NOZZLE Ø 2.0 CP		
	061008C		RAYTOOLS® NOZZLE Ø 2.3 CP		
	061008CV		RAYTOOLS® NOZZLE Ø 2.3 CP		
	061009C		RAYTOOLS® NOZZLE Ø 2.5 CP		
	061009CV		RAYTOOLS® NOZZLE Ø 2.5 CP		
	061010C		RAYTOOLS® NOZZLE Ø 2.75 CP		
	061010CV		RAYTOOLS® NOZZLE Ø 2.75 CP		
	061011C		RAYTOOLS® NOZZLE Ø 3.0 CP		
	061011CV		RAYTOOLS® NOZZLE Ø 3.0 CP		
	061012C		RAYTOOLS® NOZZLE Ø 3.2 CP		
	061012CV		RAYTOOLS® NOZZLE Ø 3.2 CP		
	061013C		RAYTOOLS® NOZZLE Ø 3.5 CP		
	061013CV		RAYTOOLS® NOZZLE Ø 3.5 CP		
	061014C		RAYTOOLS® NOZZLE Ø 4.0 CP		
	061014CV		RAYTOOLS® NOZZLE Ø 4.0 CP		
	061015C		RAYTOOLS® NOZZLE Ø 4.5 CP		
	061015CV		RAYTOOLS® NOZZLE Ø 4.5 CP		
	061016C		RAYTOOLS® NOZZLE Ø 5.0 CP		
	061016CV		RAYTOOLS® NOZZLE Ø 5.0 CP		
	061017C		RAYTOOLS® NOZZLE Ø 6.0 CP		
	061017CV		RAYTOOLS® NOZZLE Ø 6.0 CP		

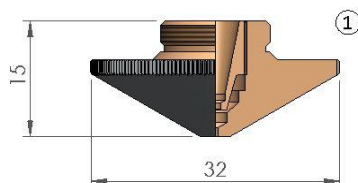
San Giorgio Plasma Parts srls is not affiliated with the named manufacturers. Reference to machines, parts, descriptions, and model numbers are for convenience in verifying compatibility only. All parts are made by or for San Giorgio Plasma Parts srls and are not made by the reference manufacturers (unless expressly indicated). All other trademarks are the properties of their respective owners.®

Replacement parts suitable for RAYTOOLS®



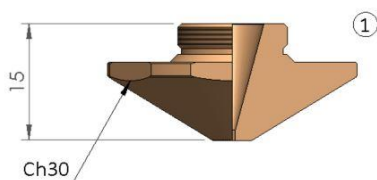
POS	CODE	ORIGINAL CODE	DESCRIPTION	unit price	5 pack price
1	061024		RAYTOOLS® DOUBLE NOZZLE Ø 0.8		
	061024V		RAYTOOLS® DOUBLE NOZZLE Ø 0.8		
	061025		RAYTOOLS® DOUBLE NOZZLE Ø 1.0		
	061025V		RAYTOOLS® DOUBLE NOZZLE Ø 1.0		
	061026		RAYTOOLS® DOUBLE NOZZLE Ø 1.2		
	061026V		RAYTOOLS® DOUBLE NOZZLE Ø 1.2		
	061027		RAYTOOLS® DOUBLE NOZZLE Ø 1.4		
	061027V		RAYTOOLS® DOUBLE NOZZLE Ø 1.4		
	061028		RAYTOOLS® DOUBLE NOZZLE Ø 1.5		
	061028V		RAYTOOLS® DOUBLE NOZZLE Ø 1.5		
	061029		RAYTOOLS® DOUBLE NOZZLE Ø 1.8		
	061029V		RAYTOOLS® DOUBLE NOZZLE Ø 1.8		
	061030		RAYTOOLS® DOUBLE NOZZLE Ø 2.0		
	061030V		RAYTOOLS® DOUBLE NOZZLE Ø 2.0		
	061031		RAYTOOLS® DOUBLE NOZZLE Ø 2.3		
	061031V		RAYTOOLS® DOUBLE NOZZLE Ø 2.3		
	061032		RAYTOOLS® DOUBLE NOZZLE Ø 2.5		
	061032V		RAYTOOLS® DOUBLE NOZZLE Ø 2.5		
	061033		RAYTOOLS® DOUBLE NOZZLE Ø 2.7		
	061033V		RAYTOOLS® DOUBLE NOZZLE Ø 2.7		
	061034		RAYTOOLS® DOUBLE NOZZLE Ø 3.0		
	061034V		RAYTOOLS® DOUBLE NOZZLE Ø 3.0		
	061035		RAYTOOLS® DOUBLE NOZZLE Ø 3.5		
	061035V		RAYTOOLS® DOUBLE NOZZLE Ø 3.5		
	061036		RAYTOOLS® DOUBLE NOZZLE Ø 4.0		
	061036V		RAYTOOLS® DOUBLE NOZZLE Ø 4.0		
	061037		RAYTOOLS® DOUBLE NOZZLE Ø 4.5		
	061037V		RAYTOOLS® DOUBLE NOZZLE Ø 4.5		
	061038		RAYTOOLS® DOUBLE NOZZLE Ø 5.0		
	061038V		RAYTOOLS® DOUBLE NOZZLE Ø 5.0		
061039		RAYTOOLS® DOUBLE NOZZLE Ø 6.0			
061039V		RAYTOOLS® DOUBLE NOZZLE Ø 6.0			

Replacement parts suitable for RAYTOOLS®



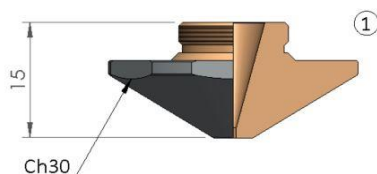
POS	CODE	ORIGINAL CODE	DESCRIPTION	unit price	5 pack price
1	061024C	120GJT0608	RAYTOOLS® DOUBLE NOZZLE Ø 0.8 CP		
	061024CV	120GJT0608	RAYTOOLS® DOUBLE NOZZLE Ø 0.8 CP		
	061025C	120GJT0610	RAYTOOLS® DOUBLE NOZZLE Ø 1.0 CP		
	061025CV	120GJT0610	RAYTOOLS® DOUBLE NOZZLE Ø 1.0 CP		
	061026C		RAYTOOLS® DOUBLE NOZZLE Ø 1.2 CP		
	061026CV		RAYTOOLS® DOUBLE NOZZLE Ø 1.2 CP		
	061027C		RAYTOOLS® DOUBLE NOZZLE Ø 1.4 CP		
	061027CV		RAYTOOLS® DOUBLE NOZZLE Ø 1.4 CP		
	061028C	120GJT0615	RAYTOOLS® DOUBLE NOZZLE Ø 1.5 CP		
	061028CV	120GJT0615	RAYTOOLS® DOUBLE NOZZLE Ø 1.5 CP		
	061029C		RAYTOOLS® DOUBLE NOZZLE Ø 1.8 CP		
	061029CV		RAYTOOLS® DOUBLE NOZZLE Ø 1.8 CP		
	061030C	120GJT0620	RAYTOOLS® DOUBLE NOZZLE Ø 2.0 CP		
	061030CV	120GJT0620	RAYTOOLS® DOUBLE NOZZLE Ø 2.0 CP		
	061031C		RAYTOOLS® DOUBLE NOZZLE Ø 2.3 CP		
	061031CV		RAYTOOLS® DOUBLE NOZZLE Ø 2.3 CP		
	061032C	120GJT0625	RAYTOOLS® DOUBLE NOZZLE Ø 2.5 CP		
	061032CV	120GJT0625	RAYTOOLS® DOUBLE NOZZLE Ø 2.5 CP		
	061033C		RAYTOOLS® DOUBLE NOZZLE Ø 2.7 CP		
	061033CV		RAYTOOLS® DOUBLE NOZZLE Ø 2.7 CP		
	061034C	120GJT0630	RAYTOOLS® DOUBLE NOZZLE Ø 3.0 CP		
	061034CV	120GJT0630	RAYTOOLS® DOUBLE NOZZLE Ø 3.0 CP		
	061035C	120GJT0635	RAYTOOLS® DOUBLE NOZZLE Ø 3.5 CP		
	061035CV	120GJT0635	RAYTOOLS® DOUBLE NOZZLE Ø 3.5 CP		
	061036C	120GJT0640	RAYTOOLS® DOUBLE NOZZLE Ø 4.0 CP		
	061036CV	120GJT0640	RAYTOOLS® DOUBLE NOZZLE Ø 4.0 CP		
	061037C	120GJT0645	RAYTOOLS® DOUBLE NOZZLE Ø 4.5 CP		
	061037CV	120GJT0645	RAYTOOLS® DOUBLE NOZZLE Ø 4.5 CP		
	061038C	120GJT0650	RAYTOOLS® DOUBLE NOZZLE Ø 5.0 CP		
	061038CV	120GJT0650	RAYTOOLS® DOUBLE NOZZLE Ø 5.0 CP		
	061039C		RAYTOOLS® DOUBLE NOZZLE Ø 6.0 CP		
	061039CV		RAYTOOLS® DOUBLE NOZZLE Ø 6.0 CP		

Replacement parts suitable for RAYTOOLS®



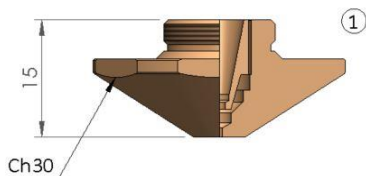
POS	CODE	ORIGINAL CODE	DESCRIPTION	unit price	5 pack price
1	062001		RAYTOOLS®/BODOR® NOZZLE Ø 0.8		
	062001V		RAYTOOLS®/BODOR® NOZZLE Ø 0.8		
	062002		RAYTOOLS®/BODOR® NOZZLE Ø 1.0		
	062002V		RAYTOOLS®/BODOR® NOZZLE Ø 1.0		
	062003		RAYTOOLS®/BODOR® NOZZLE Ø 1.2		
	062003V		RAYTOOLS®/BODOR® NOZZLE Ø 1.2		
	062004		RAYTOOLS®/BODOR® NOZZLE Ø 1.4		
	062004V		RAYTOOLS®/BODOR® NOZZLE Ø 1.4		
	062005		RAYTOOLS®/BODOR® NOZZLE Ø 1.5		
	062005V		RAYTOOLS®/BODOR® NOZZLE Ø 1.5		
	062006		RAYTOOLS®/BODOR® NOZZLE Ø 1.8		
	062006V		RAYTOOLS®/BODOR® NOZZLE Ø 1.8		
	062007		RAYTOOLS®/BODOR® NOZZLE Ø 2.0		
	062007V		RAYTOOLS®/BODOR® NOZZLE Ø 2.0		
	062009		RAYTOOLS®/BODOR® NOZZLE Ø 2.5		
	062009V		RAYTOOLS®/BODOR® NOZZLE Ø 2.5		
	062011		RAYTOOLS®/BODOR® NOZZLE Ø 3.0		
	062011V		RAYTOOLS®/BODOR® NOZZLE Ø 3.0		
	062012		RAYTOOLS®/BODOR® NOZZLE Ø 3.5		
	062012V		RAYTOOLS®/BODOR® NOZZLE Ø 3.5		
062013		RAYTOOLS®/BODOR® NOZZLE Ø 4.0			
062013V		RAYTOOLS®/BODOR® NOZZLE Ø 4.0			
062014		RAYTOOLS®/BODOR® NOZZLE Ø 4.5			
062014V		RAYTOOLS®/BODOR® NOZZLE Ø 4.5			
062015		RAYTOOLS®/BODOR® NOZZLE Ø 5.0			
062015V		RAYTOOLS®/BODOR® NOZZLE Ø 5.0			

Replacement parts suitable for RAYTOOLS®



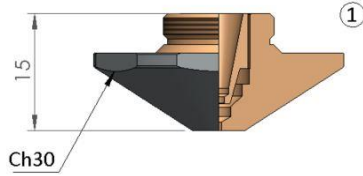
POS	CODE	ORIGINAL CODE	DESCRIPTION	unit price	5 pack price
1	062001C		RAYTOOLS®/BODOR® NOZZLE Ø 0.8 CP		
	062001CV		RAYTOOLS®/BODOR® NOZZLE Ø 0.8 CP		
	062002C		RAYTOOLS®/BODOR® NOZZLE Ø 1.0 CP		
	062002CV		RAYTOOLS®/BODOR® NOZZLE Ø 1.0 CP		
	062003C		RAYTOOLS®/BODOR® NOZZLE Ø 1.2 CP		
	062003CV		RAYTOOLS®/BODOR® NOZZLE Ø 1.2 CP		
	062004C		RAYTOOLS®/BODOR® NOZZLE Ø 1.4 CP		
	062004CV		RAYTOOLS®/BODOR® NOZZLE Ø 1.4 CP		
	062005C		RAYTOOLS®/BODOR® NOZZLE Ø 1.5 CP		
	062005CV		RAYTOOLS®/BODOR® NOZZLE Ø 1.5 CP		
	062006C		RAYTOOLS®/BODOR® NOZZLE Ø 1.8 CP		
	062006CV		RAYTOOLS®/BODOR® NOZZLE Ø 1.8 CP		
	062007C		RAYTOOLS®/BODOR® NOZZLE Ø 2.0 CP		
	062007CV		RAYTOOLS®/BODOR® NOZZLE Ø 2.0 CP		
	062009C		RAYTOOLS®/BODOR® NOZZLE Ø 2.5 CP		
	062009CV		RAYTOOLS®/BODOR® NOZZLE Ø 2.5 CP		
	062011C		RAYTOOLS®/BODOR® NOZZLE Ø 3.0 CP		
	062011CV		RAYTOOLS®/BODOR® NOZZLE Ø 3.0 CP		
	062012C		RAYTOOLS®/BODOR® NOZZLE Ø 3.5 CP		
	062012CV		RAYTOOLS®/BODOR® NOZZLE Ø 3.5 CP		
062013C		RAYTOOLS®/BODOR® NOZZLE Ø 4.0 CP			
062013CV		RAYTOOLS®/BODOR® NOZZLE Ø 4.0 CP			
062014C		RAYTOOLS®/BODOR® NOZZLE Ø 4.5 CP			
062014CV		RAYTOOLS®/BODOR® NOZZLE Ø 4.5 CP			
062015C		RAYTOOLS®/BODOR® NOZZLE Ø 5.0 CP			
062015CV		RAYTOOLS®/BODOR® NOZZLE Ø 5.0 CP			

Replacement parts suitable for RAYTOOLS®

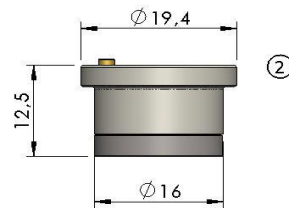
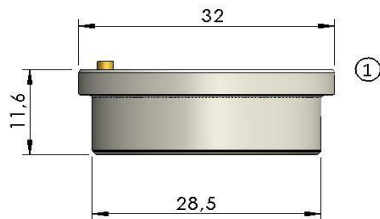


POS	CODE	ORIGINAL CODE	DESCRIPTION	unit price	5 pack price
1	062021		RAYTOOLS®/BODOR® DOUBLE NOZZLE Ø 0.8		
	062021V		RAYTOOLS®/BODOR® DOUBLE NOZZLE Ø 0.8		
	062022		RAYTOOLS®/BODOR® DOUBLE NOZZLE Ø 1.0		
	062022V		RAYTOOLS®/BODOR® DOUBLE NOZZLE Ø 1.0		
	062023		RAYTOOLS®/BODOR® DOUBLE NOZZLE Ø 1.2		
	062023V		RAYTOOLS®/BODOR® DOUBLE NOZZLE Ø 1.2		
	062024		RAYTOOLS®/BODOR® DOUBLE NOZZLE Ø 1.4		
	062024V		RAYTOOLS®/BODOR® DOUBLE NOZZLE Ø 1.4		
	062025		RAYTOOLS®/BODOR® DOUBLE NOZZLE Ø 1.5		
	062025V		RAYTOOLS®/BODOR® DOUBLE NOZZLE Ø 1.5		
	062026		RAYTOOLS®/BODOR® DOUBLE NOZZLE Ø 1.8		
	062026V		RAYTOOLS®/BODOR® DOUBLE NOZZLE Ø 1.8		
	062027		RAYTOOLS®/BODOR® DOUBLE NOZZLE Ø 2.0		
	062027V		RAYTOOLS®/BODOR® DOUBLE NOZZLE Ø 2.0		
	062029		RAYTOOLS®/BODOR® DOUBLE NOZZLE Ø 2.5		
	062029V		RAYTOOLS®/BODOR® DOUBLE NOZZLE Ø 2.5		
	062031		RAYTOOLS®/BODOR® DOUBLE NOZZLE Ø 3.0		
	062031V		RAYTOOLS®/BODOR® DOUBLE NOZZLE Ø 3.0		
	062032		RAYTOOLS®/BODOR® DOUBLE NOZZLE Ø 3.5		
	062032V		RAYTOOLS®/BODOR® DOUBLE NOZZLE Ø 3.5		
062033		RAYTOOLS®/BODOR® DOUBLE NOZZLE Ø 4.0			
062033V		RAYTOOLS®/BODOR® DOUBLE NOZZLE Ø 4.0			
062034		RAYTOOLS®/BODOR® DOUBLE NOZZLE Ø 4.5			
062034V		RAYTOOLS®/BODOR® DOUBLE NOZZLE Ø 4.5			
062035		RAYTOOLS®/BODOR® DOUBLE NOZZLE Ø 5.0			
062035V		RAYTOOLS®/BODOR® DOUBLE NOZZLE Ø 5.0			

Replacement parts suitable for RAYTOOLS®



POS	CODE	ORIGINAL CODE	DESCRIPTION	unit price	5 pack price
1	062021C		RAYTOOLS®/BODOR® DOUBLE NOZZLE Ø 0.8 CP		
	062021CV		RAYTOOLS®/BODOR® DOUBLE NOZZLE Ø 0.8 CP		
	062022C		RAYTOOLS®/BODOR® DOUBLE NOZZLE Ø 1.0 CP		
	062022CV		RAYTOOLS®/BODOR® DOUBLE NOZZLE Ø 1.0 CP		
	062023C		RAYTOOLS®/BODOR® DOUBLE NOZZLE Ø 1.2 CP		
	062023CV		RAYTOOLS®/BODOR® DOUBLE NOZZLE Ø 1.2 CP		
	062024C		RAYTOOLS®/BODOR® DOUBLE NOZZLE Ø 1.4 CP		
	062024CV		RAYTOOLS®/BODOR® DOUBLE NOZZLE Ø 1.4 CP		
	062025C		RAYTOOLS®/BODOR® DOUBLE NOZZLE Ø 1.5 CP		
	062025CV		RAYTOOLS®/BODOR® DOUBLE NOZZLE Ø 1.5 CP		
	062026C		RAYTOOLS®/BODOR® DOUBLE NOZZLE Ø 1.8 CP		
	062026CV		RAYTOOLS®/BODOR® DOUBLE NOZZLE Ø 1.8 CP		
	062027C		RAYTOOLS®/BODOR® DOUBLE NOZZLE Ø 2.0 CP		
	062027CV		RAYTOOLS®/BODOR® DOUBLE NOZZLE Ø 2.0 CP		
	062029C		RAYTOOLS®/BODOR® DOUBLE NOZZLE Ø 2.5 CP		
	062029CV		RAYTOOLS®/BODOR® DOUBLE NOZZLE Ø 2.5 CP		
	062031C		RAYTOOLS®/BODOR® DOUBLE NOZZLE Ø 3.0 CP		
	062031CV		RAYTOOLS®/BODOR® DOUBLE NOZZLE Ø 3.0 CP		
	062032C		RAYTOOLS®/BODOR® DOUBLE NOZZLE Ø 3.5 CP		
	062032CV		RAYTOOLS®/BODOR® DOUBLE NOZZLE Ø 3.5 CP		
062033C		RAYTOOLS®/BODOR® DOUBLE NOZZLE Ø 4.0 CP			
062033CV		RAYTOOLS®/BODOR® DOUBLE NOZZLE Ø 4.0 CP			
062034C		RAYTOOLS®/BODOR® DOUBLE NOZZLE Ø 4.5 CP			
062034CV		RAYTOOLS®/BODOR® DOUBLE NOZZLE Ø 4.5 CP			
062035C		RAYTOOLS®/BODOR® DOUBLE NOZZLE Ø 5.0 CP			
062035CV		RAYTOOLS®/BODOR® DOUBLE NOZZLE Ø 5.0 CP			



POS	CODE	ORIGINAL CODE	DESCRIPTION	unit price	5 pack price
1	069002	AO-NOZ-D00051	RAYTOOLS® CERAMIC NOZZLE HOLDER		
2	069003	31220000006	RAYTOOLS® CERAMIC NOZZLE HOLDER		

San Giorgio Plasma Parts srls is not affiliated with the named manufacturers. Reference to machines, parts, descriptions, and model numbers are for convenience in verifying compatibility only. All parts are made by or for San Giorgio Plasma Parts srls and are not made by the reference manufacturers (unless expressly indicated). All other trademarks are the properties of their respective owners."