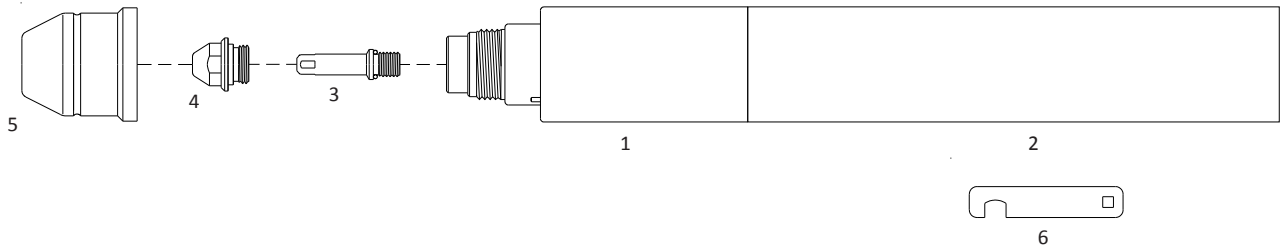


# 22

Replacement parts suitable for:

**OTC®**  
D - 12000

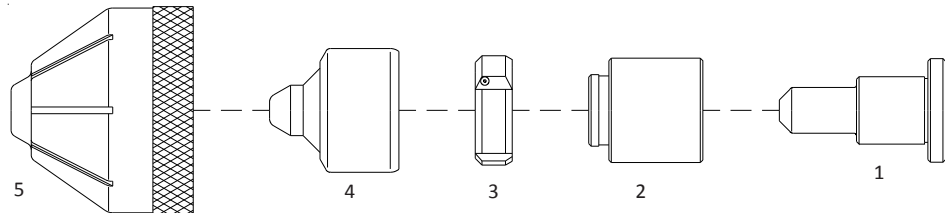


(\* ) with parts in place and 60354

No.	Ref.	Code	Description	Pkg.	No.	Ref.	Code	Description	Pkg.
		07840	Machine torch 6m	1	5		80054	Shield cap Ceramic	10
		07850	Machine torch 12m	1			60354	Shield cap Fiberglass	10
1		07811	Machine torch head (*)	1					
2		07215	Machine handle	1	6		07800.57	Wrench for tip & electrode	1
3	H839M00	52750/OR	Electrode with O-Ring	10					
4	H839K03	51269	Tip $\phi$ 0.8 30A	10					
		H839K02	Tip $\phi$ 1.0 50A	10			07890	Cable 6m Machine torch	1
		H839K01	Tip $\phi$ 1.3 80A	10			07895	Cable 12m Machine torch	1
		H839G03	Tip $\phi$ 1.6 120A	10					

**KOMATSU®**  
G 940®

ON REQUEST



No.	Ref.	Code	Description	Pkg.	No.	Ref.	Code	Description	Pkg.
1	7848-60-5330	52850	Electrode	5	4	7848-60-5170	51499	Tip $\phi$ 0.5	5
2	7848-60-5350	80050	Insulating sleeve	2			7848-60-5130	51500	Tip $\phi$ 0.6
3	7848-60-5360	60450	Swirl ring	2			7848-60-5160	51501	Tip $\phi$ 0.7
4	7848-60-5150	51498	Tip $\phi$ 0.4	5	5	7848-60-5110	60550	Conical retaining cap	1

**Notes**

---



---



---



---