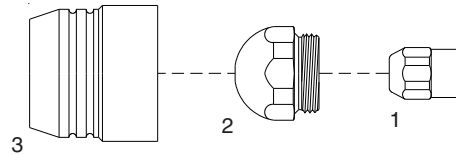


Replacement parts suitable for:

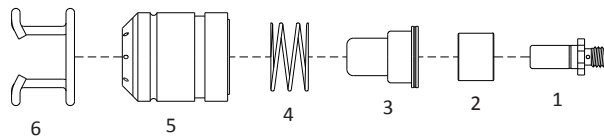
AUTOGEN RITTER® PHB 120

while stocks last



No.	Ref.	Code	Description	No.	Ref.	Code	Description
1	412-02-00	52875	Electrode	2	412-04-14	51667	Tip \varnothing 1.4
2	412-04-10	51665	Tip \varnothing 1.0		412-04-16	51668	Tip \varnothing 1.6
	412-04-12	51666	Tip \varnothing 1.2	3	413-05-00	60430	Nozzle cap w/inbuilt safety

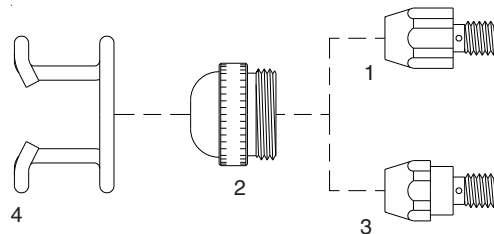
BINZEL® PSB 31 KK®



No.	Ref.	Code	Description	No.	Ref.	Code	Description
1	742.0016	52018	Electrode mm 15.5	4	742.0084	51906	Spring
2	742.0082	60407	Insulating sleeve	5		60408	Air diffuser, insulator
3	742.0083	41005	Tip \varnothing 1.0		742.0086	60409	Air diffuser with safety ring
	742.0106	41006	Tip \varnothing 1.2	6	742.0089	51902	Spacer spring

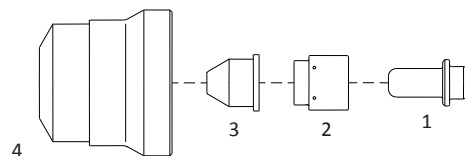
BINZEL® PSB 60/80/121®

while stocks last



No.	Ref.	Code	Description	No.	Ref.	Code	Description
1	743.0067	52515	Electrode Hf.	3	743.0425Hf	52655	Special electrode Hf.
2	743.0122	51107	Tip \varnothing 1.0	4	743.0149	51901	Spacer spring
	743.0143	51108	Tip \varnothing 1.3				
	743.0132	51109	Tip \varnothing 1.5				
	743.0209	51110	Tip \varnothing 1.8				
	743.0355	51135	Tip \varnothing 2.0				

BINZEL® ABIPLAS CUT 70®



No.	Ref.	Code	Description	No.	Ref.	Code	Description
1	742.D056	52660	Electrode	3	742.D018	51545.11	Conical tip \varnothing 1.1
2	742.D073	60200	Swirl ring		742.D041	51545.12	Conical tip \varnothing 1.2
3	742.D008	51545.09	Conical tip \varnothing 0.9	4	742.D023	60470	Shield cap